

# **Gather**

## **Requirements**

Ryan Hill, Calvin Keats, Noah Williams

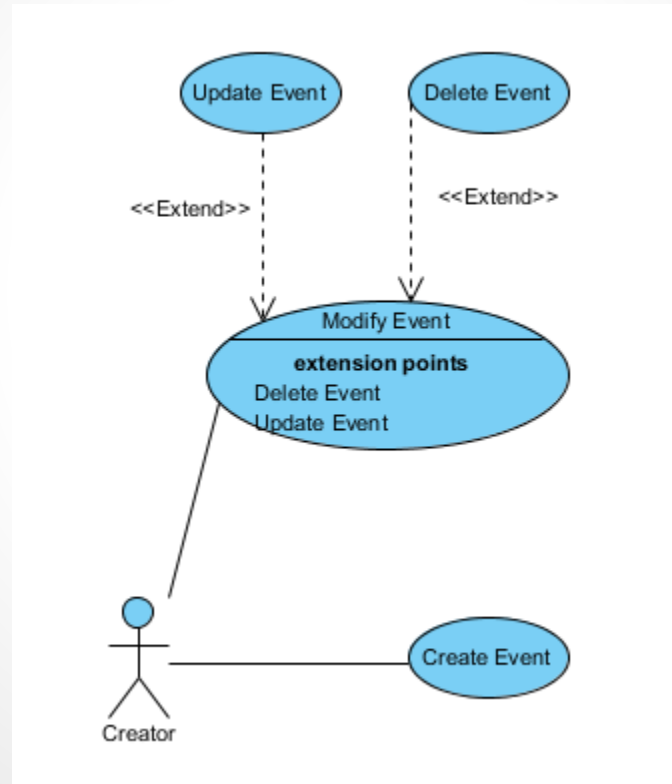
# Problem Definition

Gather is being designed to break the isolating mould of current social networking by enabling users to socialize with new people. In doing so we hope that, with appropriate usage, Gather will be able to help people acclimate to a new environment or even branch-out socially by providing them with a tool to find and interact with like-minded people.

# Scope of System

Gather will utilize several different features of the android system. To start, we will use the Google Maps API in order to show events based on location data. Event data, such as the description, location, time, etc. will be held in a database. Optionally, users will be able to create user profiles which will also be held on our database.

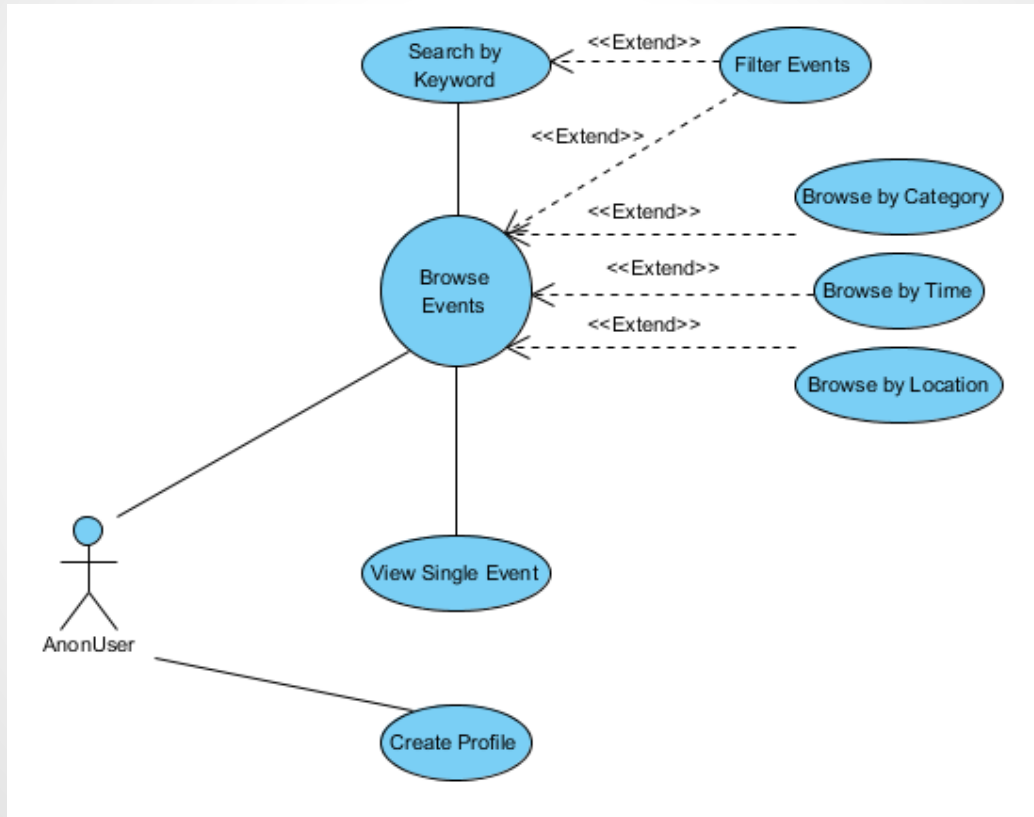
# 'Creator' Use Case Diagram



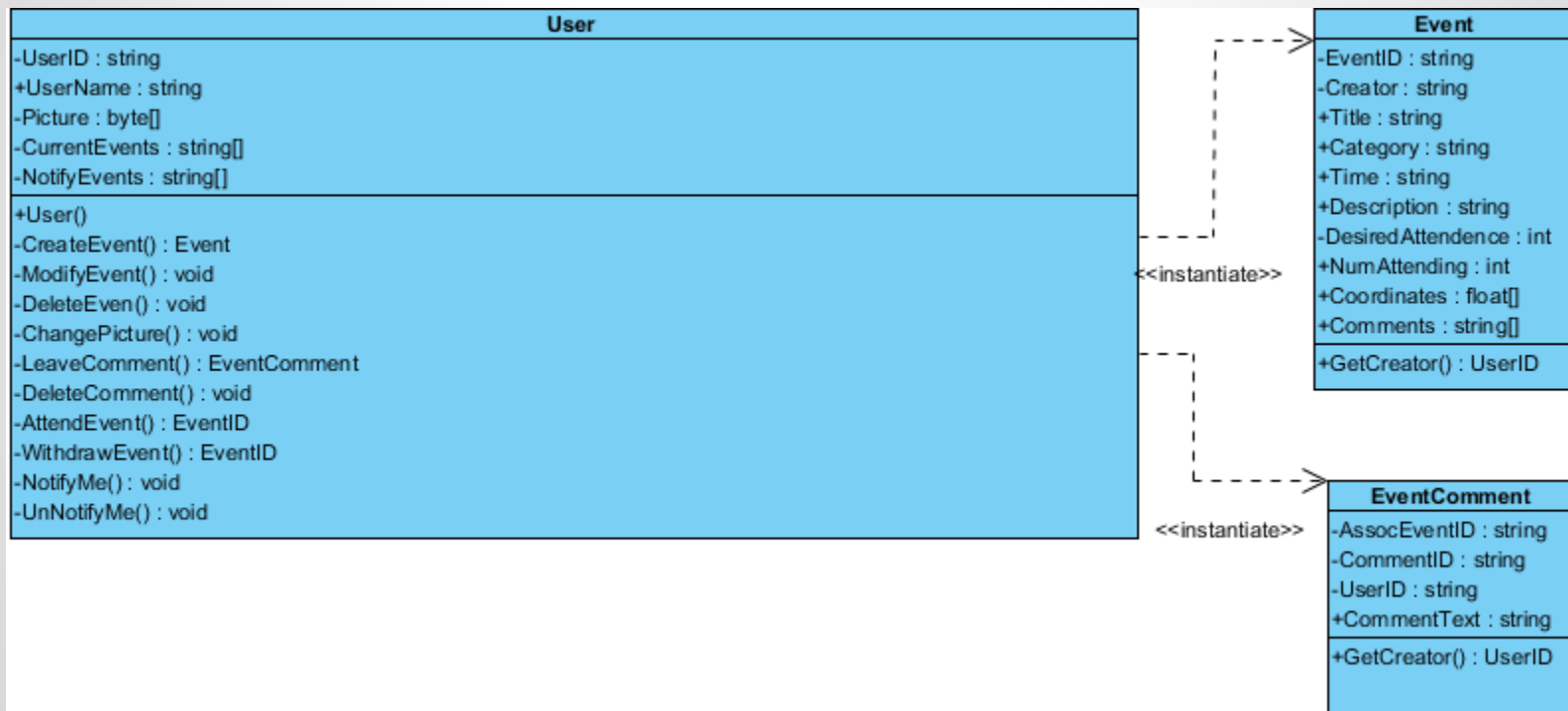
# 'User' Use Case Diagram



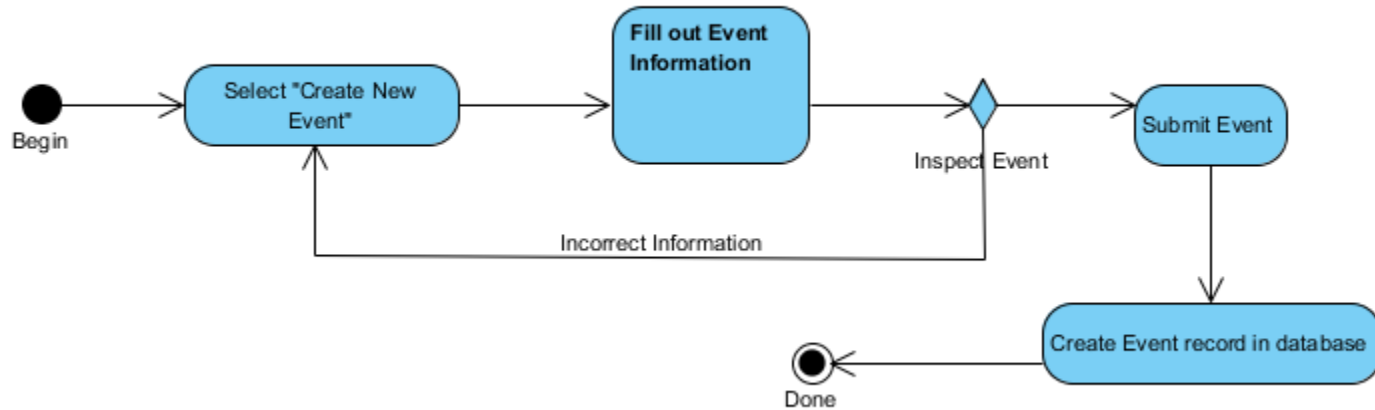
# 'AnonUser' Use Case Diagram



# High-level Class Diagram

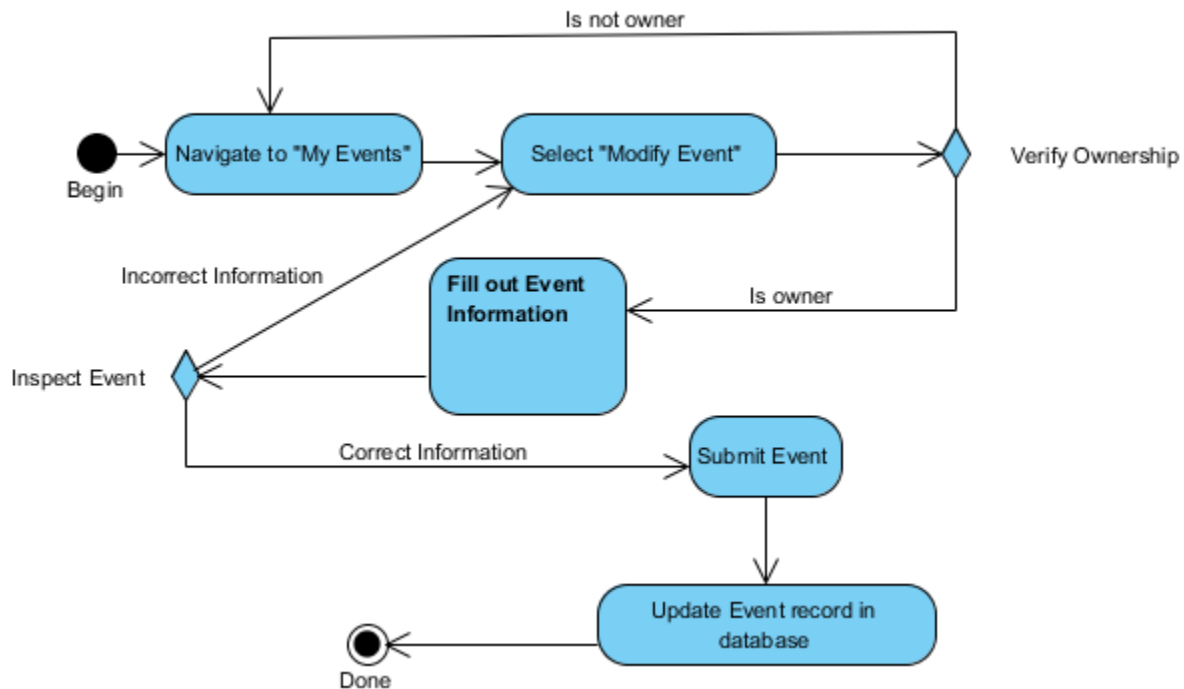


# Create Event

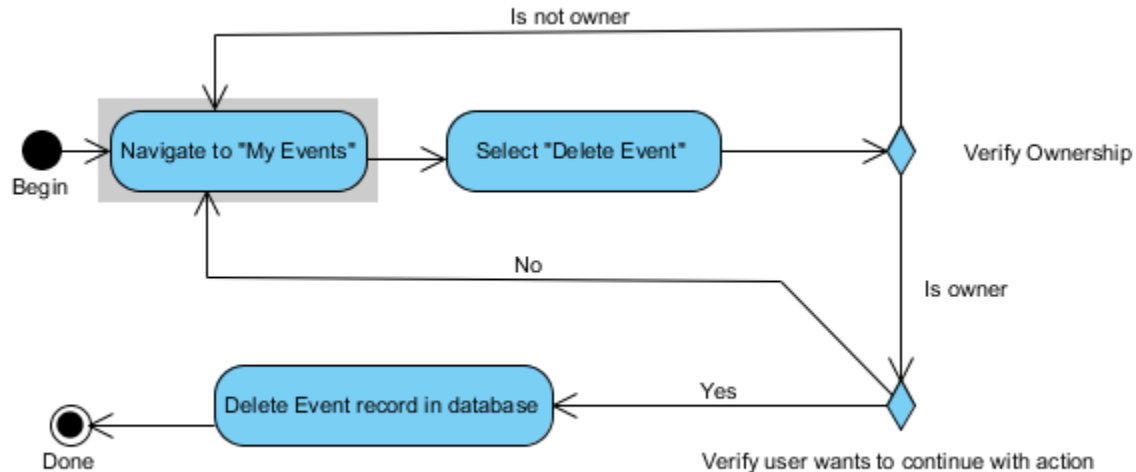




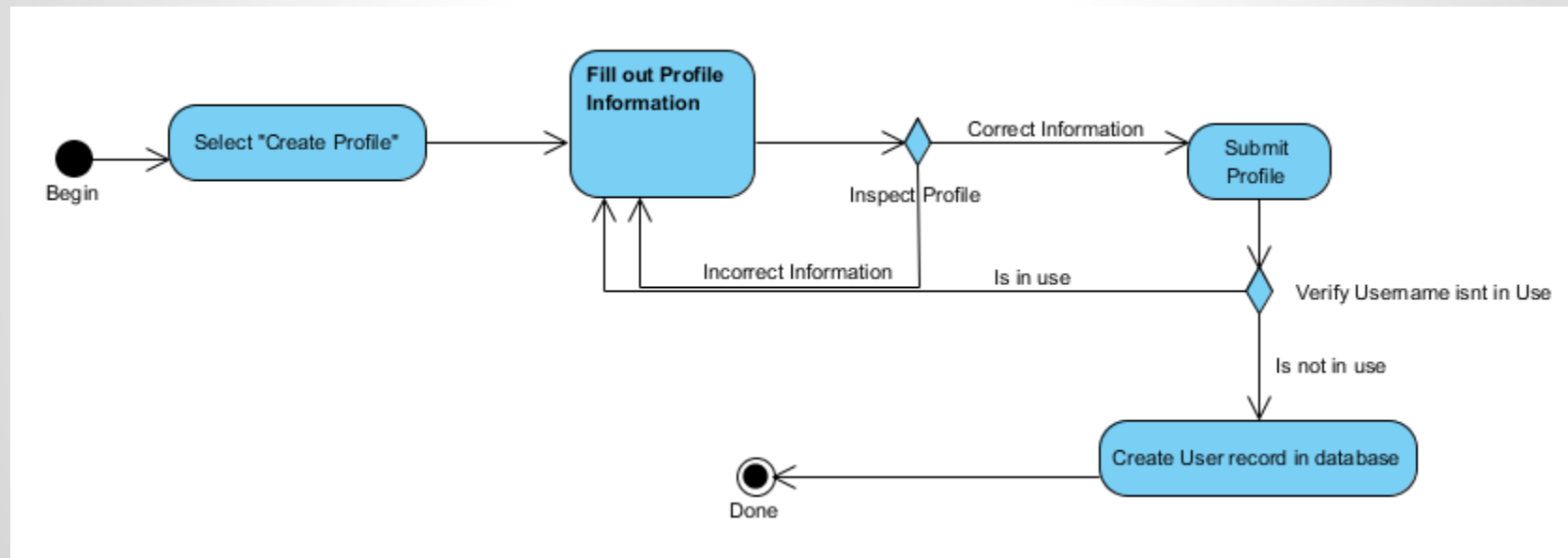
# Edit Event



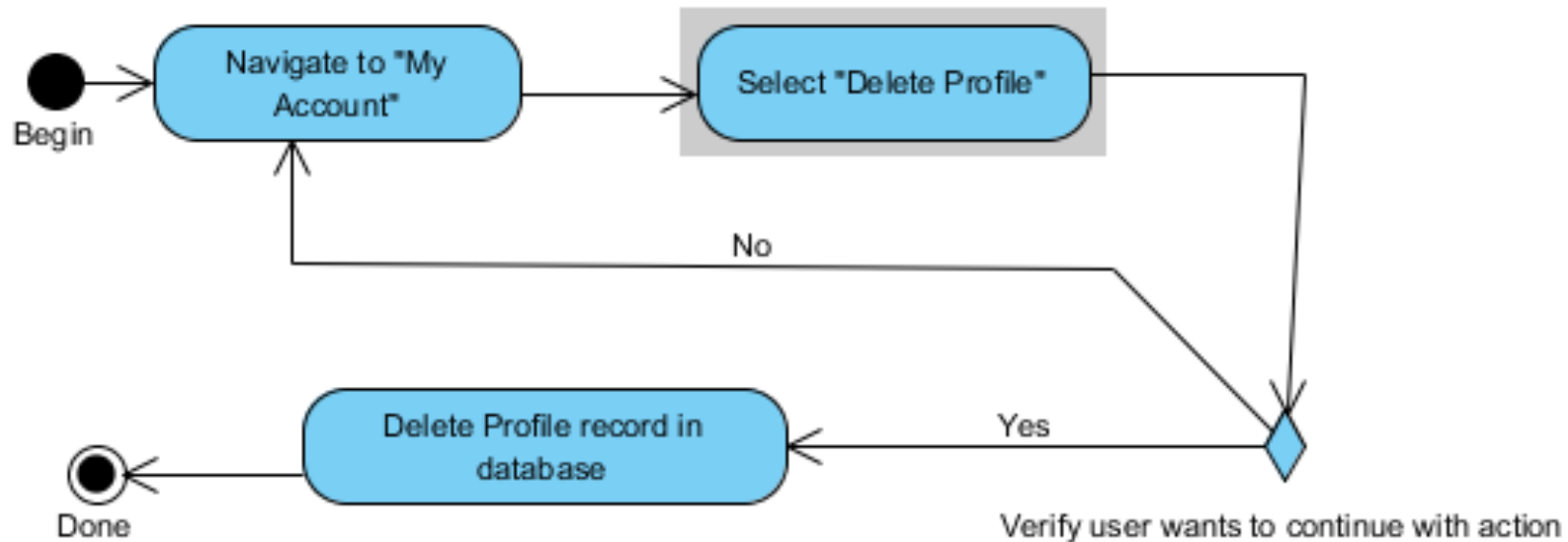
# Delete Event



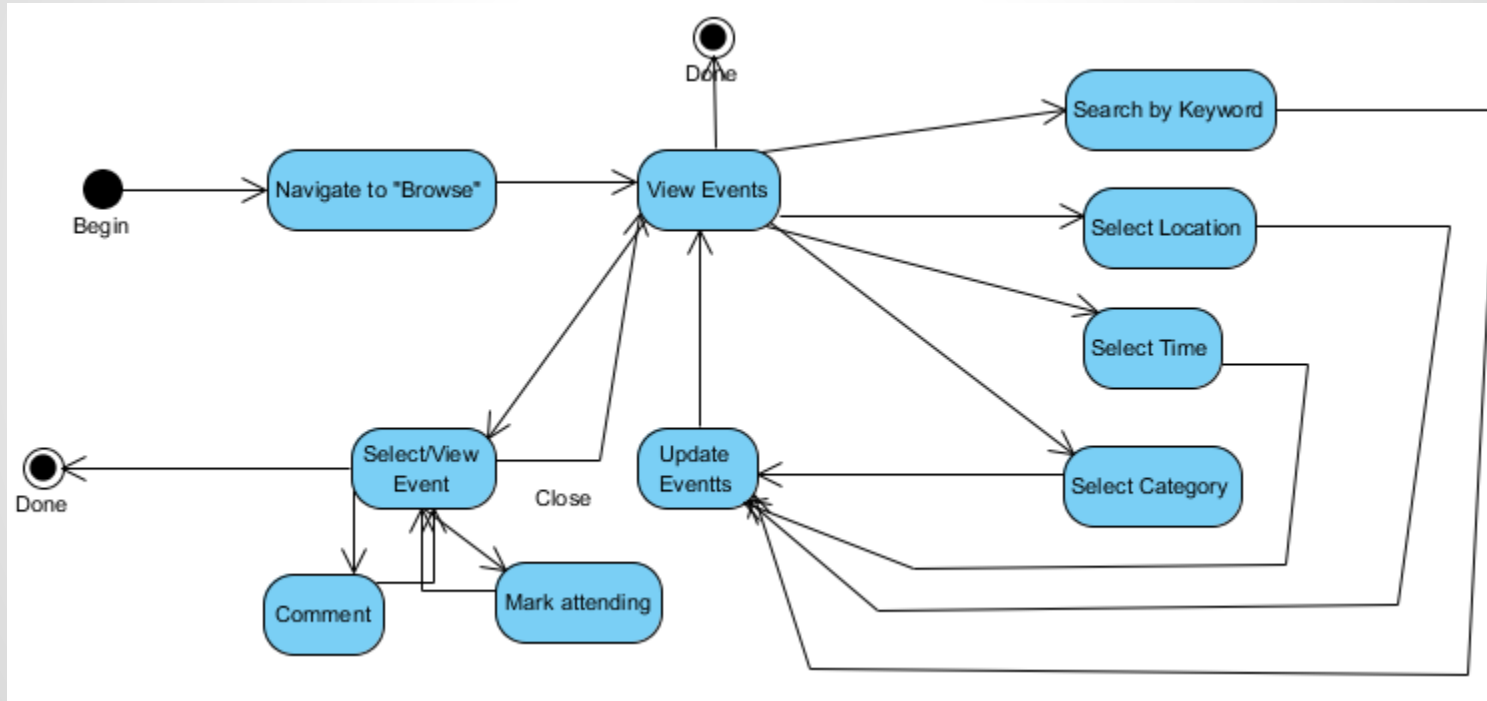
# Make profile



# Delete Profile



# Browse Events



# Feature priority

- Required
  - Create & Manage Events
  - Browse & Search Events
  - User-profile creation
- Possible
  - Navigation within Application
  - Sponsored Events
- Future
  - iOS & WP8/8.1
  - Browser Integration

# Risks to the project

- No pre-defined user base
- Storing event and user information
- Project potential depends on number of users
- Management problems grow with number of users